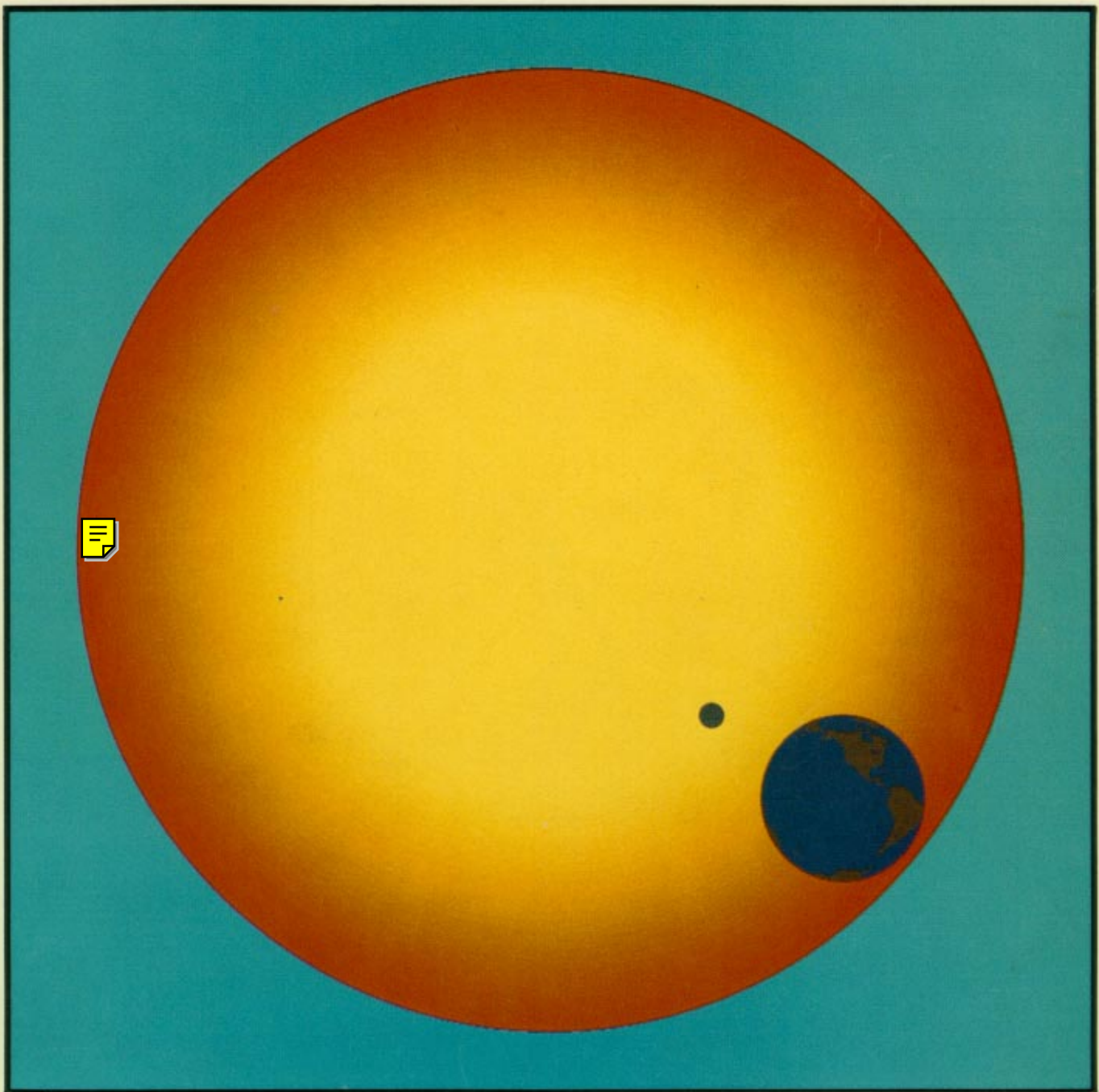
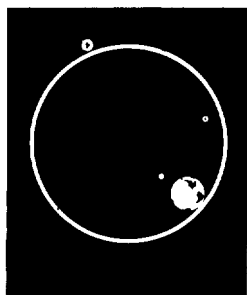
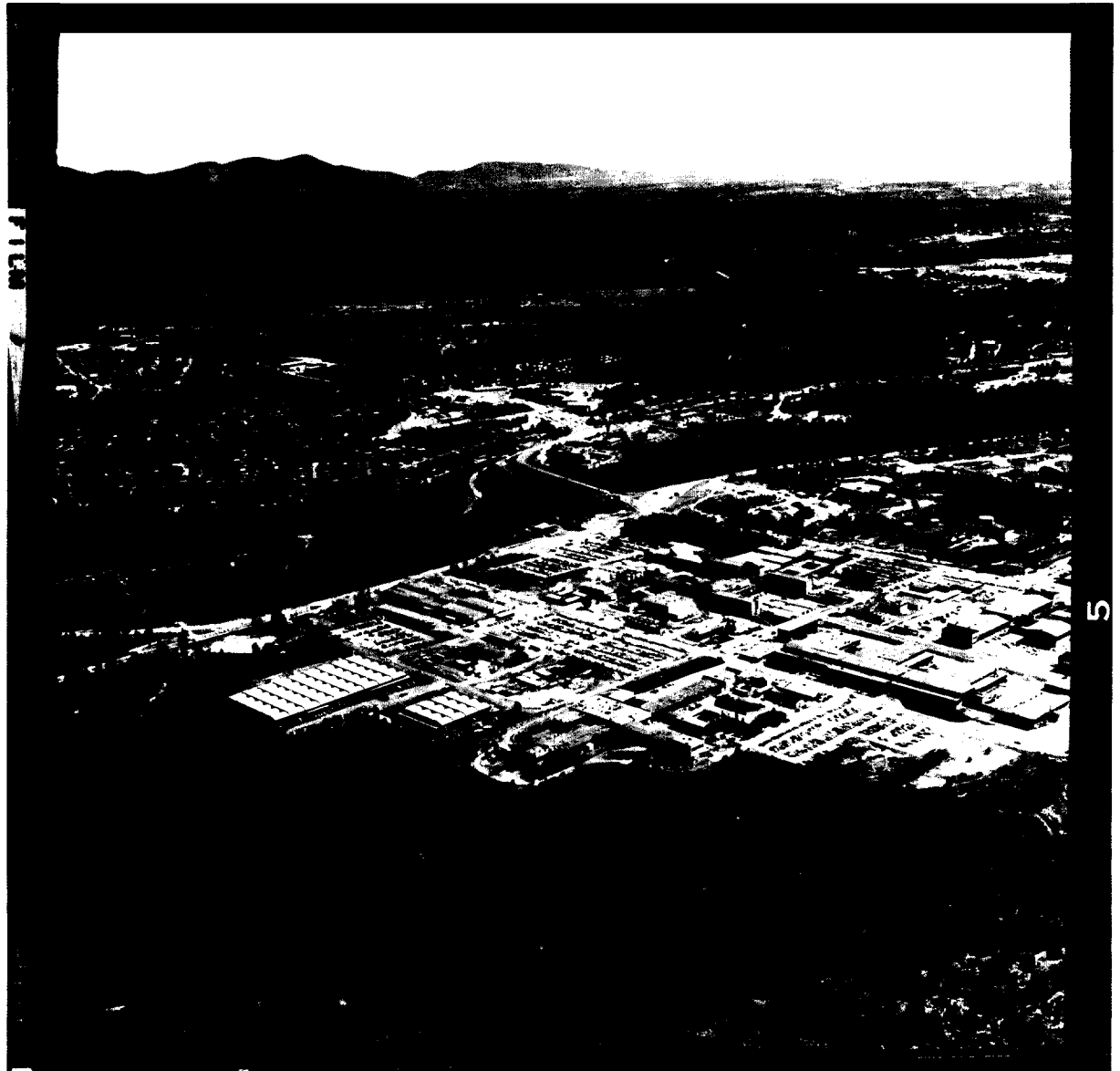


Los Alamos Science

LOS ALAMOS NATIONAL LABORATORY





On the cover: Artist's conception of the sun, earth, and moon before a solar eclipse. 'This computer-graphic illustration was created using a color-mixing subroutine developed by Rongriego. The subroutine compensates for the nonlinear response characteristics of an FR80 micro-film recorder to provide a perceptibly linear intensity gradation. Saturation problems are eliminated and the additive colors, red, green, and blue may be mixed uniformly to produce a full spectrum of color and intensity.

Overstriking concentric circles of full-intensity red and green delineates the sun's yellow center: the outer regions of the sun were created by selectively removing green with a cosine distribution. Selective blanking protected the emulsion where the earth and moon were to be exposed on the film. These images, generated in separate tiles, were then projected into the protected areas. The resultant slide was produced using MAPPER, a graphics software package developed at Los Alamos.

Edgar Stein

Los Alamos Science

LOS ALAMOS NATIONAL LABORATORY

Volume 2, Number I, 1981

CONTENTS

	Dialogue	2
RESEARCH AND REVIEW		
	The Solar Corona at Totality	4
	by Charles F. Keller, Jr., and Donald Liebenberg	
	<i>FEATURE:</i> In Flight: The Story of Los Alamos Eclipse Missions	38
	by Barb Mulkin	
	High Explosives: The Interaction of Chemistry and Mechanics	48
	by William C. Davis	
	A Novel Approach to Boundary-Layer Problems	76
	by Carl Bender	
SCIENCE IDEAS		
	The Neutrino in 1980	92
	by Thomas J. Bowles and Margaret L. Silbar	
	Neutrinos in Cosmology and Astrophysics	112
	by Edward W. Kolb, Jr.	
	Neutrinos and Grand Unified Theories	114
	by Terrence J. Goldman	
SHORT SUBJECTS		
	The New Los Alamos Center for Nonlinear Studies	117
	by David K. Campbell and Basil Nichols	
	IGPP Workshop Report: Plasma Physics	124
	Near the Earth's Bow Shock by S. Peter Gary	
PEOPLE		
	Physics, Philosophy, Leadership, Policy:	132
	<i>An Interview with Peter Carruthers</i>	
	by Leonard M. Simmons, Jr., and Geoffrey B. West	

Los Alamos National Laboratory, an Equal Opportunity Employer/Operated by the University of California for the United States Department of Energy under contract W-7405-ENG-36

Published by the University of California, Los Alamos National Laboratory, Bldg. SM-43, Casa Grande Drive. Second class mailing permit pending at the Los Alamos, New Mexico Post Office.

Address mail to: Los Alamos Science
Los Alamos National Laboratory
P.O. Box 1663, MS 399
Los Alamos, New Mexico 87545